



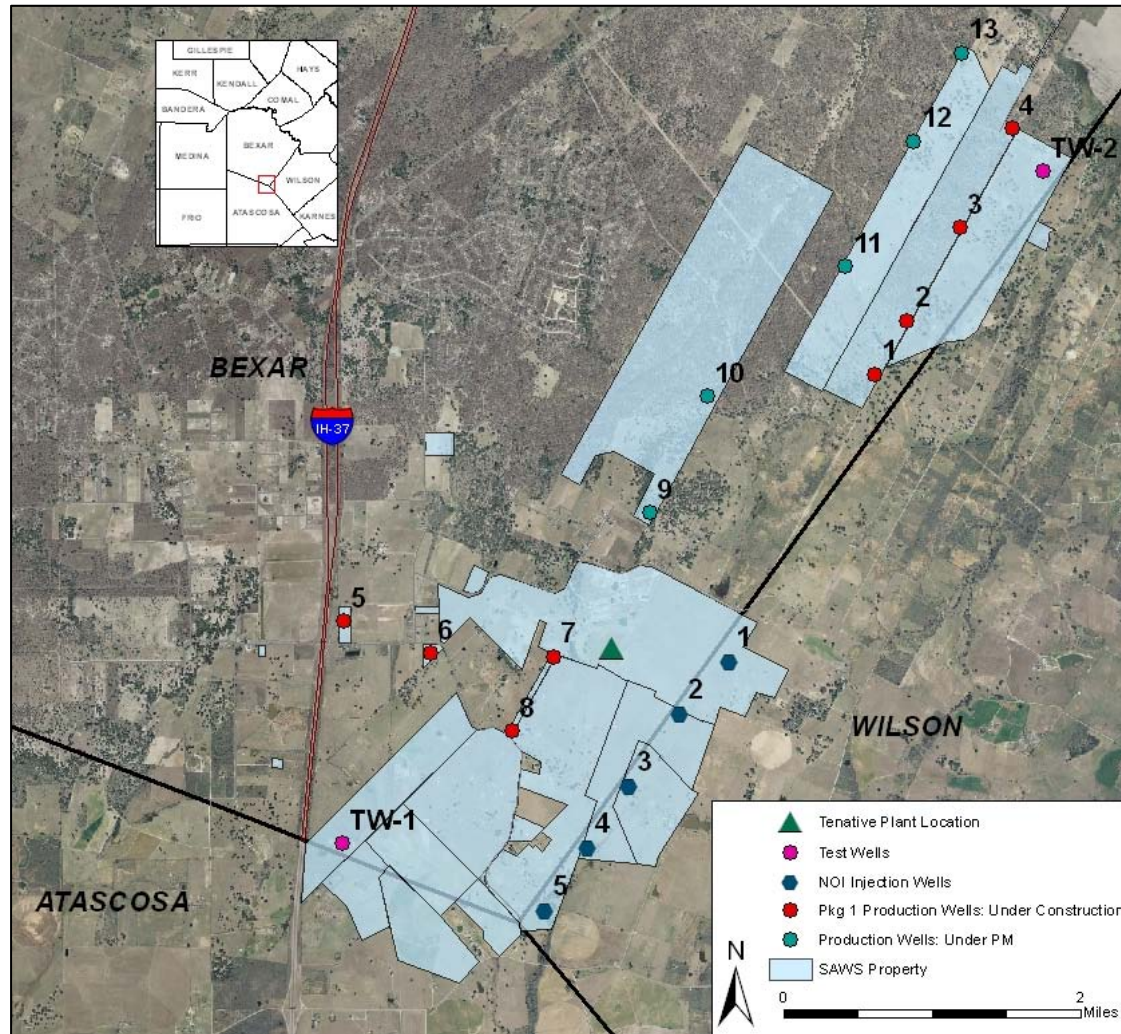
Brackish Groundwater Desalination Program Manager RFQ

October 26, 2011

Pre-submittal Meeting

Philip C. Campos, Jr., CPA
Director/Contracting

Program Overview



October 26, 2011

Brackish Groundwater Desalination Program Manager RFO



Program Overview

Phased Approach

- Phase I (10 MGD) to be complete 2016
- Final Capacity (25 MGD)

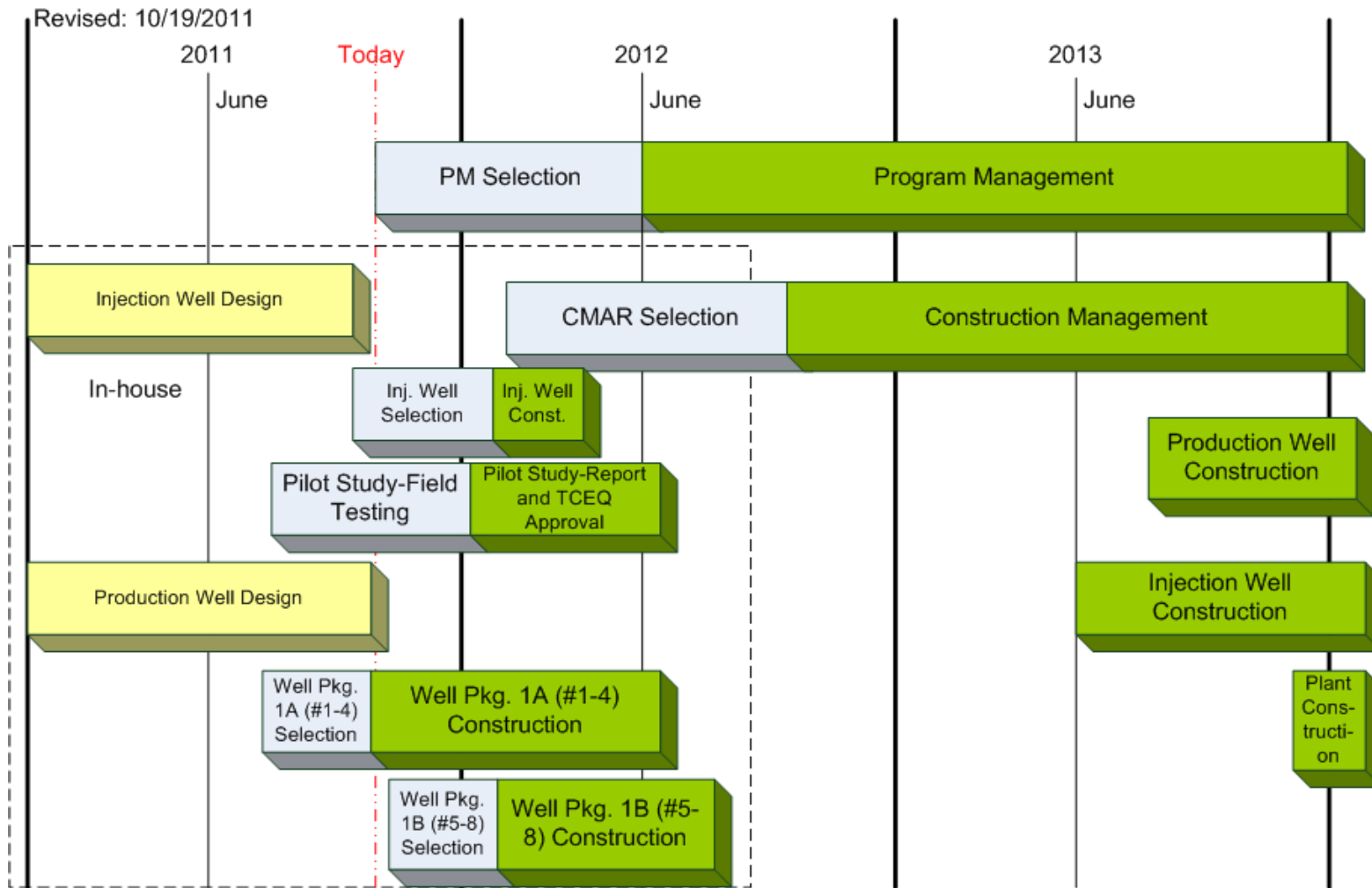
Components of the Program

- Production Wells
- Injection Wells
- Pipeline
- Treatment Plant
- Electrical/SCADA
- Startup, Commissioning, & Testing

October 26, 2011

Brackish Groundwater Desalination Program Manager RFQ

Program Overview

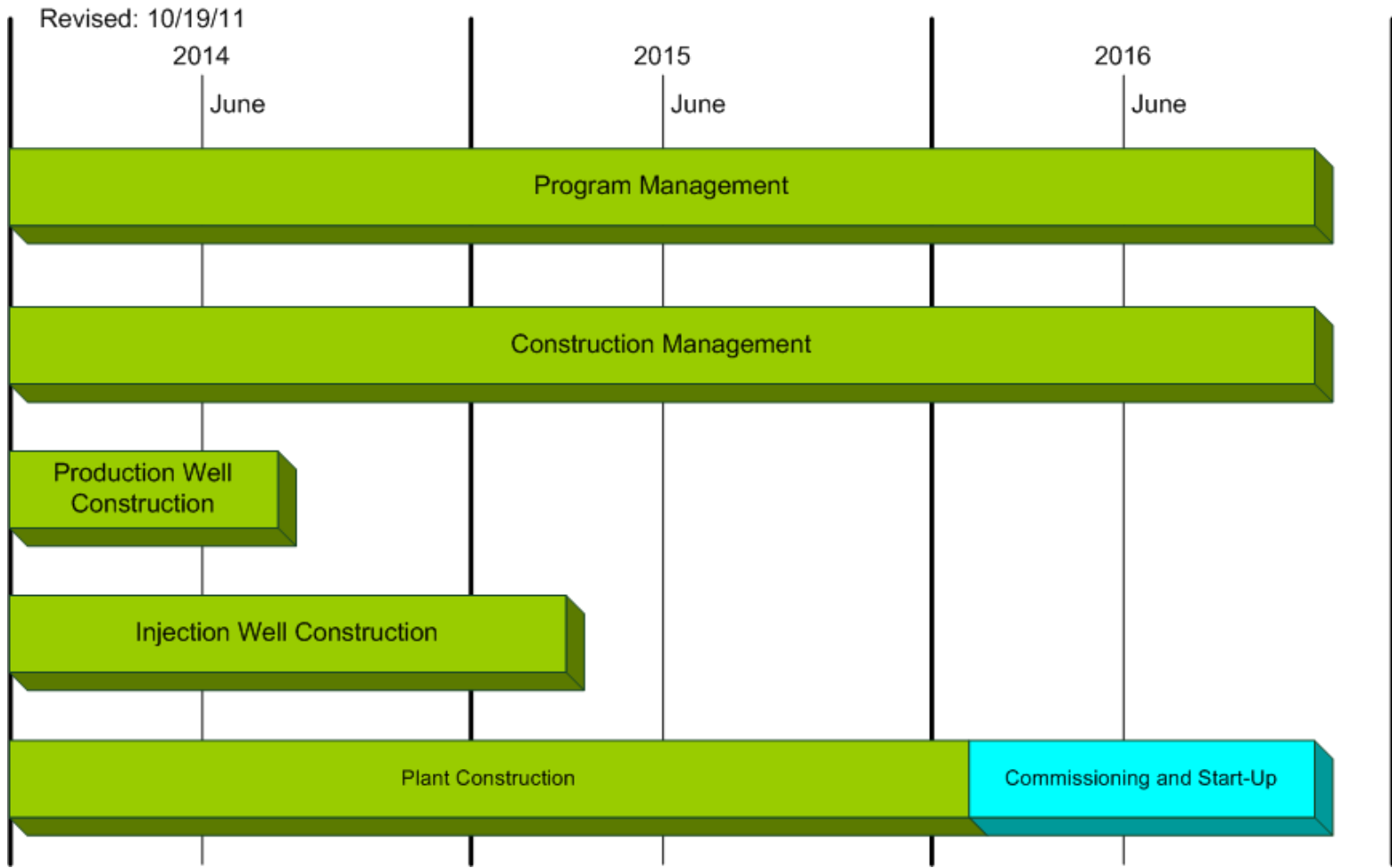


October 26, 2011

Brackish Groundwater Desalination Program Manager RFQ



Program Overview



October 26, 2011

Brackish Groundwater Desalination Program Manager RFQ



Pre-submittal Overview

- During this meeting the following will be discussed:
 - Key Items of solicitation;
 - Project Components;
 - SMWB Scoring;
 - SAWS' Evaluation Process;
 - Submission of Design Teams;
 - Scoring of Multiple Design Teams example;
 - Distribution of a Technical DVD – one per firm.

October 26, 2011

Brackish Groundwater Desalination Program Manager RFQ



Program Manager Key Items

- RFQ responses due by December 19, 2011 no later than 4:00 pm CST
- Follow the specific delivery instructions
- Page limit requirement is less than 238 pages
- Specific requirements for Program Manager Role
- Selected Program Manager & Sub-contractors not allowed to respond to the CMAR solicitation
- Submit all questions in writing by November 2, 2011 no later than 4:00 pm CST

October 26, 2011

Brackish Groundwater Desalination Program Manager RFQ



Program Manager Components

- RFQ requirements broken out into 7 Components:
 - Program Management;
 - Pipeline Design;
 - Production Well Field Design;
 - Reverse Osmosis Plant Design
 - Injection Well Design;
 - Electrical / SCADA Design; and
 - Start-up, Commissioning & Acceptance Testing Services.

October 26, 2011

Brackish Groundwater Desalination Program Manager RFQ



Evaluation Information

- RFQ component Information:

Evaluation Criteria	Max Points	Page Limit
Program Management Services	180	51
Pipeline Design	70	27
Production Well Field Design	70	27
Reverse Osmosis Plant Design	170	44
Injection Well Design	160	35
Electrical / SCADA Design	80	27
Start-up Commissioning & Acceptance Testing Services	120	27

October 26, 2011

Brackish Groundwater Desalination Program Manager RFQ

SMWB Evaluation Information

- Small Minority Women Owned Business (SMWB) participation
 - Overall participation goal 25% SMWB;
 - 150 points maximum - overall program participation;
 - SMWB Good Faith Efforts must be documented;
 - Diverse team can potentially maximize SMWB scoring;

October 26, 2011

Brackish Groundwater Desalination Program Manager RFQ



SMWB Evaluation Information

- Exhibit B – Good Faith Effort Plan
 - Provide All sub-contractors on team;
 - List the work component & team number applicable for each sub-contractor;
 - Provide the work to be performed by sub-contractor;
 - Must identify the % participation related to the overall program;
 - Complete **Section C** only if goal is not met; and
 - All respondents must sign the Affirmation statement.

October 26, 2011

Brackish Groundwater Desalination Program Manager RFQ



SMWB Evaluations

- SMWB Points will be awarded as follows:
 - Minority & Woman Owned Business:
 - Prime Respondents – 100 points; plus
 - SMWB sub-contractor program % participation times 200;
 - Up to 50 points if goal met.
 - Small Business Enterprises:
 - Prime Respondents – 50 points; plus
 - SMWB sub-contractor program % participation times 200;
 - Up to 50 points if goal met – maximum 100 total points.
 - Non-SMWB Respondents:
 - SMWB sub-contractor program % participation times 200;
 - Up to 50 points if goal met – maximum 100 total points.

October 26, 2011

Brackish Groundwater Desalination Program Manager RFQ



SMWB Questions

- Potential SMWB sub-contractor listings available;
- Forward other SMWB questions to:

Marisol V. Robles

SMWB Program Manager

210-233-3420

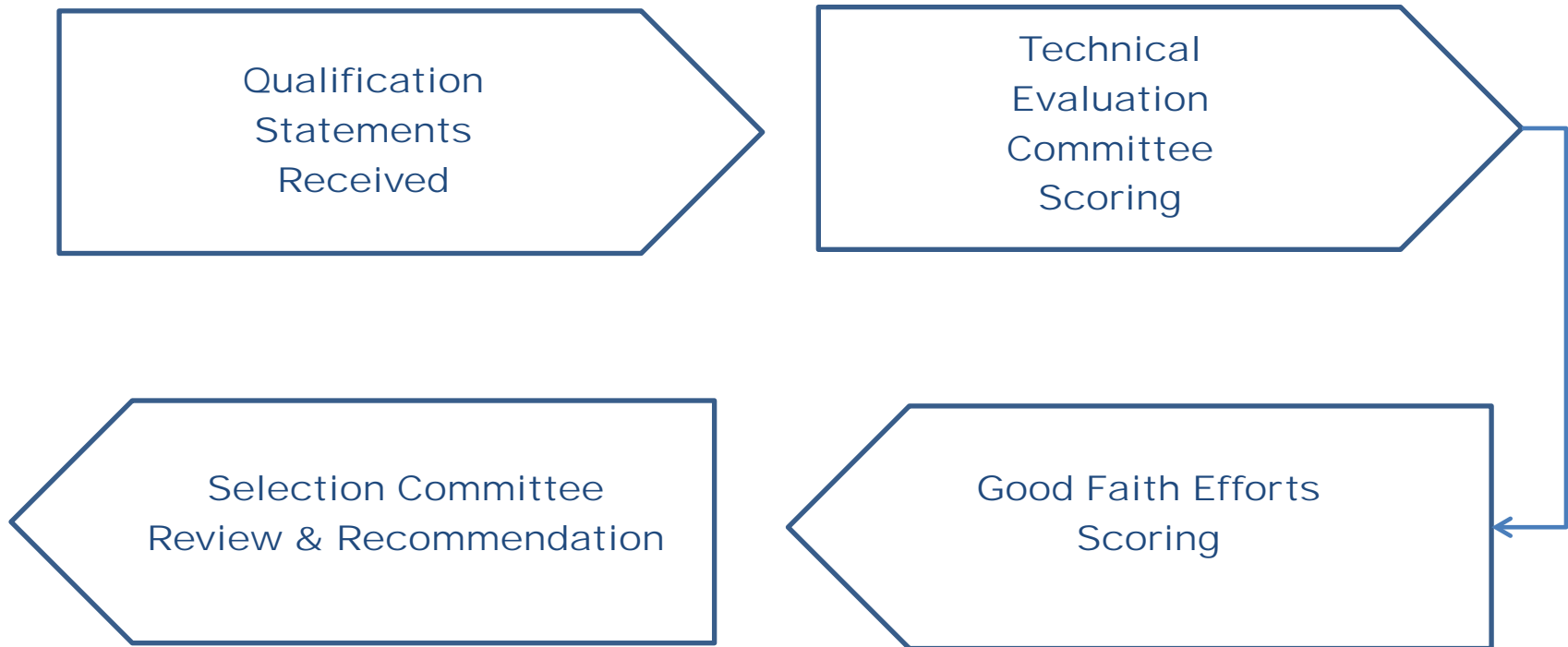
marisol.robles@saws.org

October 26, 2011

Brackish Groundwater Desalination Program Manager RFQ



SAWS' Evaluation Process



October 26, 2011

Brackish Groundwater Desalination Program Manager RFQ

SAWS' Evaluation

Submission of Design Teams

- Project Manager respondents must submit an Engineering Design team;
- Up to three Engineering Design team can be submitted per design component;
- SAWS will evaluate and score each team submitted per design component;

October 26, 2011

Brackish Groundwater Desalination Program Manager RFQ



SAWS' Evaluation

Submission of Design Teams

- If more than one design team submitted per component:
 - ✓ The highest scored team per design component added to final team composition;
 - ✓ SMWB program % participation scored on the final team composition.
- Example provided.

Team Building - Example

Submission of Design Teams

Component	Firm A Response			Firm B Response			Firm C Response		
<u>Program Management</u>									
<u>Pipeline Design</u>	One Offered Option			Two Offered Options			Three Offered Options		
	Team 1			Team 1	Team 2		Team 1	Team 2	Team 3
<u>Production Well Design</u>	Three Offered Options			Three Offered Options			Three Offered Options		
	Team 1	Team 2	Team 3	Team 1	Team 2	Team 3	Team 1	Team 2	Team 3
<u>Reverse Osmosis Trmt Plant</u>	Two Offered Options			Three Offered Options			Three Offered Options		
	Team 1	Team 2		Team 1	Team 2	Team 3	Team 1	Team 2	Team 3
<u>Injection Well Design</u>	Three Offered Options			One Offered Option			Three Offered Options		
	Team 1	Team 2	Team 3	Team 1			Team 1	Team 2	Team 3
<u>Etc.</u>									

October 26, 2011

Brackish Groundwater Desalination Program Manager RFQ



Team Building - Example

Scoring of Design Teams

Component	Firm A Response			Firm B Response			Firm C Response		
<u>Program Management</u>									
<u>Pipeline Design</u>	One Offered Option			Two Offered Options			Three Offered Options		
	Team 1 (65)			Team 1 (66)	Team 2 (68)		Team 1 (60)	Team 2 (63)	Team 3 (68)
<u>Production Well Design</u>	Three Offered Options			Three Offered Options			Three Offered Options		
	Team 1 (66)	Team 2 (69)	Team 3 (62)	Team 1 (68)	Team 2 (66)	Team 3 (63)	Team 1 (67)	Team 2 (65)	Team 3 (62)
<u>Reverse Osmosis Trmt Plant</u>	Two Offered Options			Three Offered Options			Three Offered Options		
	Team 1 (163)	Team 2 (160)		Team 1 (158)	Team 2 (162)	Team 3 (160)	Team 1 (157)	Team 2 (160)	Team 3 (158)
<u>Injection Well Design</u>	Three Offered Options			One Offered Option			Three Offered Options		
	Team 1 (145)	Team 2 (151)	Team 3 (153)	Team 1 (153)			Team 1 (149)	Team 2 (154)	Team 3 (151)
<u>Etc.</u>									

Sample Score

October 26, 2011

Brackish Groundwater Desalination Program Manager RFQ

Team Building - Example

Design Team Scores Used

Component	Firm A Response	Firm B Response	Firm C Response
<u>Program Management</u>			
<u>Pipeline Design</u>	Only One Submitted	Result after Evaluation	Results after Evaluation
	Team 1 (65)	Team 2 (68)	Team 3 (68)
<u>Production Well Design</u>	Result after Evaluation	Result after Evaluation	Results after Evaluation
	Team 2 (69)	Team 1 (68)	Team 1 (67)
<u>Reverse Osmosis Trmt Plant</u>	Result after Evaluation	Result after Evaluation	Results after Evaluation
	Team 1 (163)	Team 2 (162)	Team 2 (160)
<u>Injection Well Design</u>	Result after Evaluation	Only One Submitted	Results after Evaluation
	Team 3 (153)	Team 1 (153)	Team 2 (154)
<u>Etc.</u>			

Sample Score

October 26, 2011

Brackish Groundwater Desalination Program Manager RFQ

Other Submittal Information

- Five Fill-able Forms to be available on web-site:
 - RFQ Submission Checklist;
 - Respondent Questionnaire;
 - Good Faith Effort Plan (Exhibit B);
 - Conflict of Interest Statement; and
 - Acknowledgement of Texas Public Information Act Requirements and Release Form.

Technical DVD

- Feasibility Study Report
- RO Membrane Pilot Study Report
- Pipe Loop Study
 - Impact of finished water on SAWS infrastructure
- Injection Well (Notice of Intent) General Permit
- Environmental Assessments
 - First 8 Production Well Property
 - Test Injection Well Property

October 26, 2011

Brackish Groundwater Desalination Program Manager RFQ



Reminder

- Technical questions:
 - ✓ Must be received by 4:00 pm CST, on November 2, 2011;
 - ✓ Must be in writing, by e-mail or fax and submit to:

Marc Ripley

Contract Administration

San Antonio Water System

2800 U.S. Hwy 281 North, Suite 171

San Antonio, TX 78212

E-mail: mripley@saws.org

Phone: 210-233-3136

Fax: 210-233-5283

October 26, 2011

Brackish Groundwater Desalination Program Manager RFQ





Brackish Groundwater Desalination Program Manager RFQ

October 26, 2011

Pre-submittal Meeting

Philip C. Campos, Jr., CPA
Director/Contracting